

# The **co-operative** membership

## Funding opportunities

Lis Spencer (Co-operative & Membership Officer)

**South West Fairtrade Day**

22 September 2012 Exeter



The **co-operative** membership

# The Co-operative Group

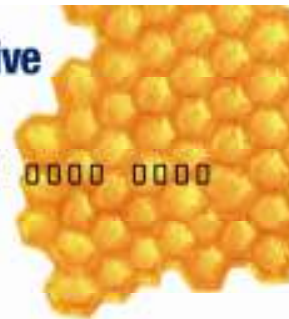
- Member owned, democratically controlled group
- Shares its profits with its members
- Runs 16 different businesses including Food, Bank, Pharmacy, Travel, Funeralcare and Farms
- Has a turnover of over £13 billion and around 112,000 employees



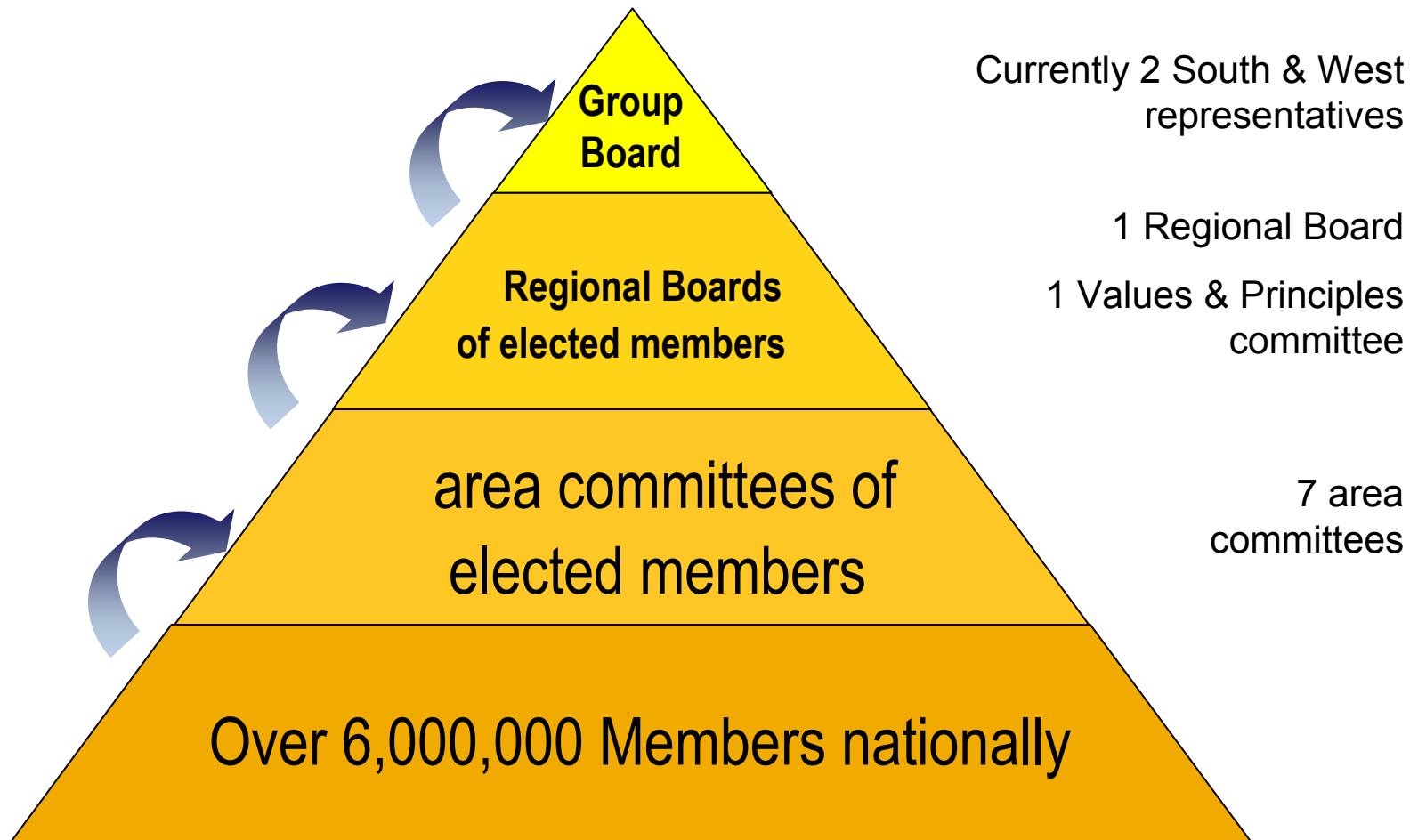
The **co-operative**  
membership

633174 9100 0000 0000

Mrs E Hudson  
Member  
The Co-operative Group



# Democracy in Action



# The Co-operative and Fairtrade



## Just some of The Co-operative's Fairtrade Firsts:

- **2000** Invited all our customers to make a Fairtrade Pledge to buy at least one Fairtrade product a month
- **2000** Introduced the UK's first Fairtrade bananas
- **2001** Introduced the UK's first fairly traded supermarket own brand wine
- **2002** Converted all our block chocolate to Fairtrade



## More Fairtrade firsts...

- **2003** Developed Fairtrade communities and introduced the worlds first Fairtrade mangoes and pineapples
- **2003** Converted all our own-brand coffee to Fairtrade
- **2007** Introduced the UK's first supermarket bag for life
- **2012** Transferred all our bananas to Fairtrade
- **2013** Any primary commodity from the developing world that can be Fairtrade will be Fairtrade



# Co-operative Funding

- Community Fund
- Support for events during Fairtrade Fortnight and beyond





# The Community Fund

- Made up from Members' donations
- Distributes local money back to local organisations
- Last year 630,000 people donated £600,000 in the South West alone



# The Community Fund

- Apply online at [www.s.coop/donate](http://www.s.coop/donate)
- Apply for between £100 - £2,000
- Apply any time (4 – 6 month turnaround)
- Decisions made locally by your elected Area Committee Members



# The Community Fund exclusions:



- Statutory bodies and core work of Community Interest Companies or Credit Unions
- Projects designed to promote a particular religion are excluded from the scheme
- Party political activity

# The Community Fund exclusions...

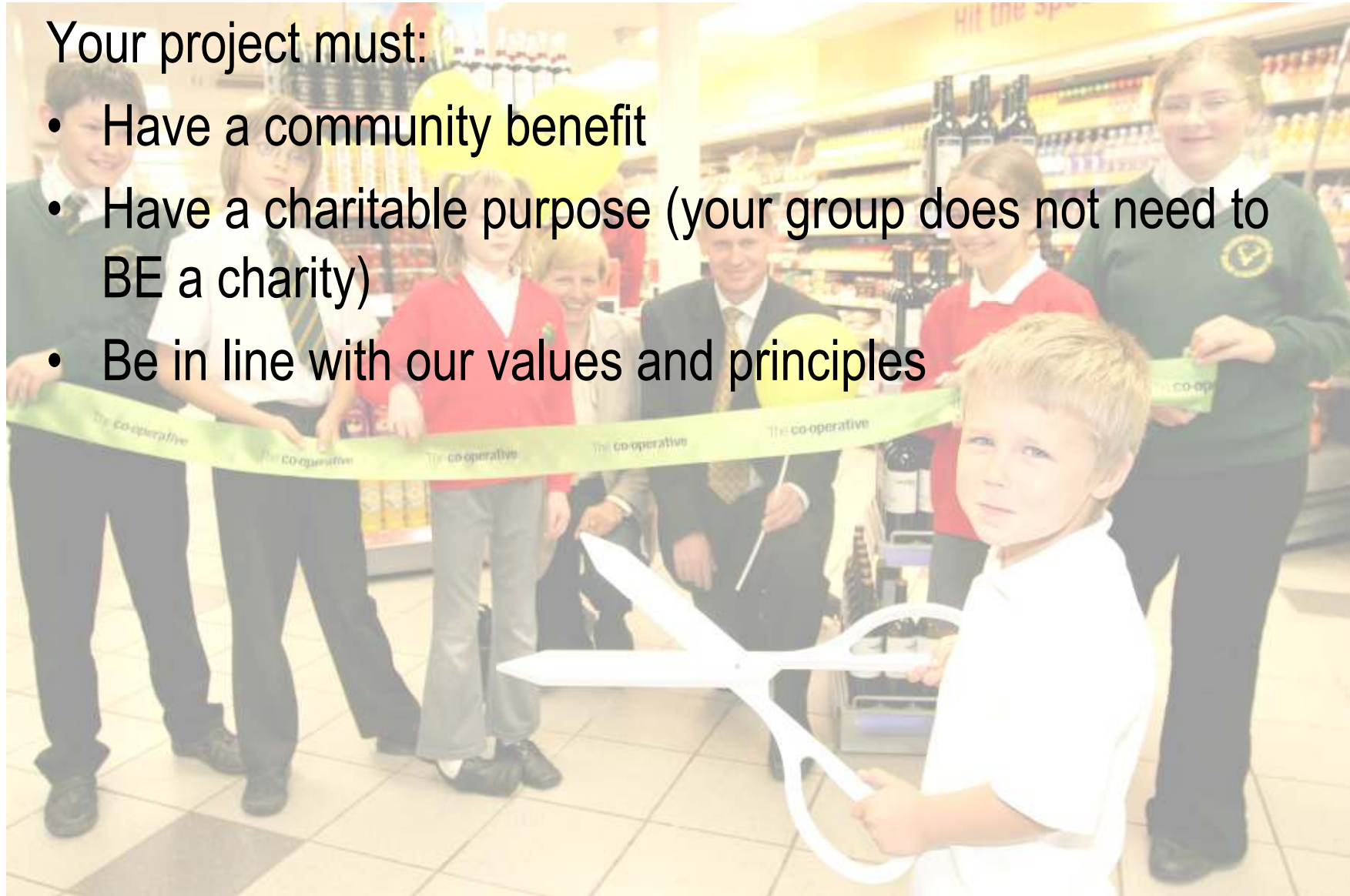


- Individuals
- Projects benefiting communities overseas
- Property improvements where you do not own the property or have at least a 15 year lease

# The Community Fund

Your project must:

- Have a community benefit
- Have a charitable purpose (your group does not need to BE a charity)
- Be in line with our values and principles





# Our values

- Self help
- Self responsibility
- Democracy
- Equality
- Equity
- Solidarity



# Our principles

- Voluntary and open membership
- Democratic member control
- Member economic participation
- Autonomy
- Education, training and information
- Co-operation amongst co-operatives
- Concern for community



# Examples of The Community Fund

- Last year, you awarded just under **half a million pounds** to 350 community groups in the South West region.





# Co-operative support for Fairtrade Fortnight

- Community Packs
- School Packs
- Partnership Projects
- Producer Tour



## Other sources of support and funding

<p><b>The Discretionary Fund</b></p> <ul style="list-style-type: none"><li>•Regional fund of £5,000 for each area</li><li>•Given at the discretion of the Area Committee</li><li>•Contact your local Co-operative &amp; Membership officer for more details</li></ul>	<p><b>The Enterprise Hub</b></p> <ul style="list-style-type: none"><li>•Expert advice and training for new or existing co-operatives</li><li>•Development of finance packages with grants up to £5,000</li></ul>
<p><b>Your Community Vote</b></p> <ul style="list-style-type: none"><li>•Targeted in particular areas</li><li>•Application open to groups in that area</li><li>•In-store voting by members</li></ul>	<p><b>The Co-operative Loan Fund</b></p> <ul style="list-style-type: none"><li>•Loans for both new and existing co-operatives of between £5,000 and £75,000</li></ul>

# Where to get more information...

## **Community Fund:**

[www.s.coop/donate](http://www.s.coop/donate)

Helpline 0844 262 4001

## **All other Co-operative funding and support:**

Co-operative Membership Team

01884 266 892

[memberships@co-operative.coop](mailto:memberships@co-operative.coop)

Your turn...

Any  
Questions?